

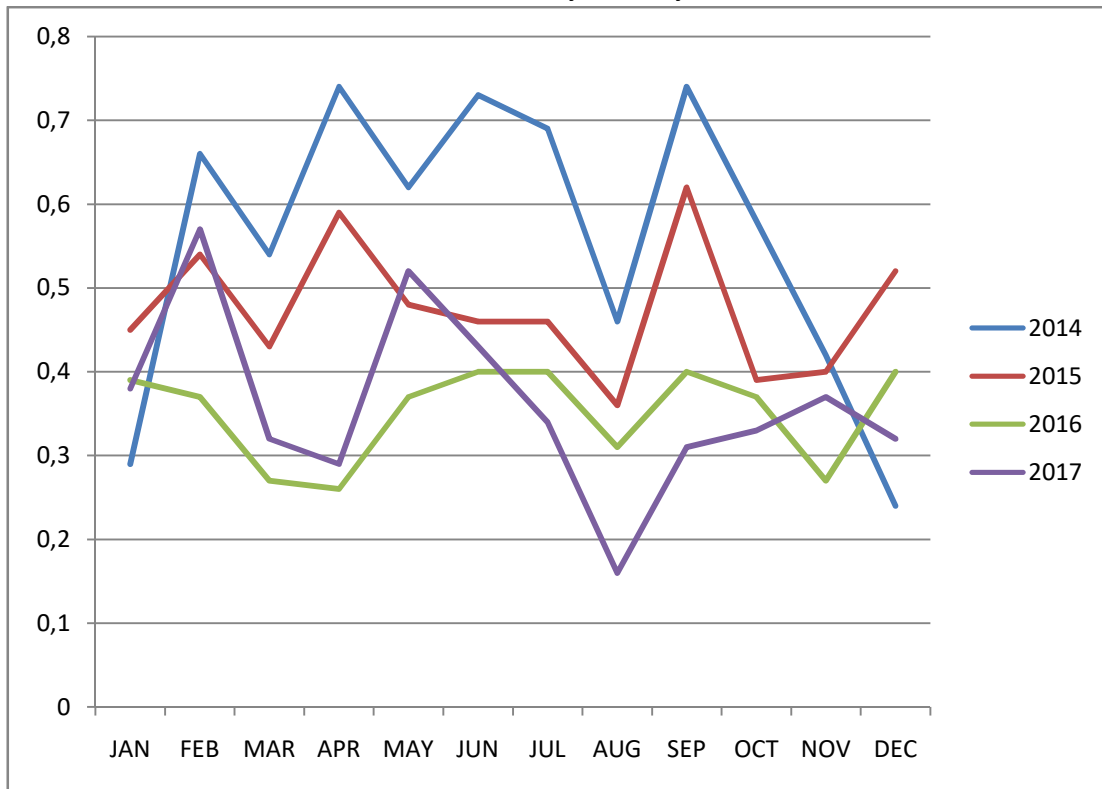
# MOGÁN PRINCESS\*\*\*\*



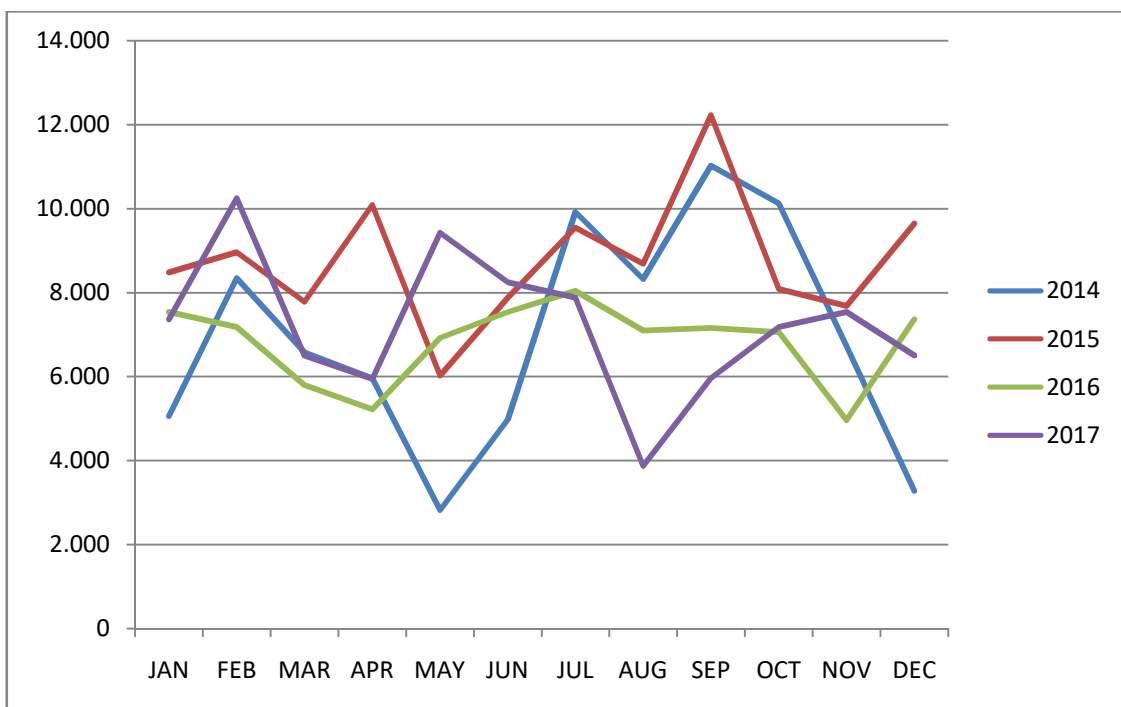
## DATA OF OCCUPATION AND WATER CONSUMPTION IN m3 – YEARS 2014, 2015, 2016 & 2017

MONTH	2014			2015			2016			2017		
	Guests	m3	m3/guest	Guests	m3	m3/guest	Guests	m3	m3/guest	Guests	m3	m3/guest
JAN	17.585	5.060	0,29	18.767	8.480	0,45	19.340	7.540	0,39	19.333	7.360	0,38
FEB	12.656	8.340	0,66	16.586	8.960	0,54	19.402	7.180	0,37	17.931	10.244	0,57
MAR	12.296	6.580	0,54	17.961	7.780	0,43	21.383	5.800	0,27	19.992	6.494	0,32
APR	8.028	5.960	0,74	17.184	10.080	0,59	20.137	5.220	0,26	20.308	5.942	0,29
MAY	4.566	2.820	0,62	12.571	6.020	0,48	18.693	6.920	0,37	18.242	9.420	0,52
JUN	6.860	4.980	0,73	17.043	7.880	0,46	19.036	7.540	0,40	18.991	8.246	0,43
JUL	14.480	9.920	0,69	20.856	9.540	0,46	20.306	8.040	0,40	23.317	7.882	0,34
AUG	17.939	8.320	0,46	23.995	8.680	0,36	22.681	7.100	0,31	24.309	3.870	0,16
SEP	14.841	11.020	0,74	19.753	12.220	0,62	18.101	7.160	0,40	19.049	5.962	0,31
OCT	17.525	10.120	0,58	20.909	8.080	0,39	19.257	7.060	0,37	21.861	7.182	0,33
NOV	15.910	6.720	0,42	19.293	7.680	0,40	18.291	4.960	0,27	20.563	7.538	0,37
DEC	13.810	3.280	0,24	18.630	9.640	0,52	18.269	7.360	0,40	20.180	6.504	0,32
<b>ANNUAL TOTALS</b>	<b>156.424</b>	<b>83.120</b>	<b>%0,55</b>	<b>223.548</b>	<b>105.040</b>	<b>%0,47</b>	<b>234.896</b>	<b>81.880</b>	<b>%0,35</b>	<b>244.076</b>	<b>86.644</b>	<b>%0,36</b>

**WATER CONSUMPTION IN m3 PER GUEST - MOGÁN PRINCESS  
COMPARATIVE 2014, 2015, 2016 Y 2017**



**MONTHLY TOTAL WATER CONSUMPTION IN m3 - MOGÁN PRINCESS  
COMPARATIVE 2014, 2015, 2016 Y 2017**



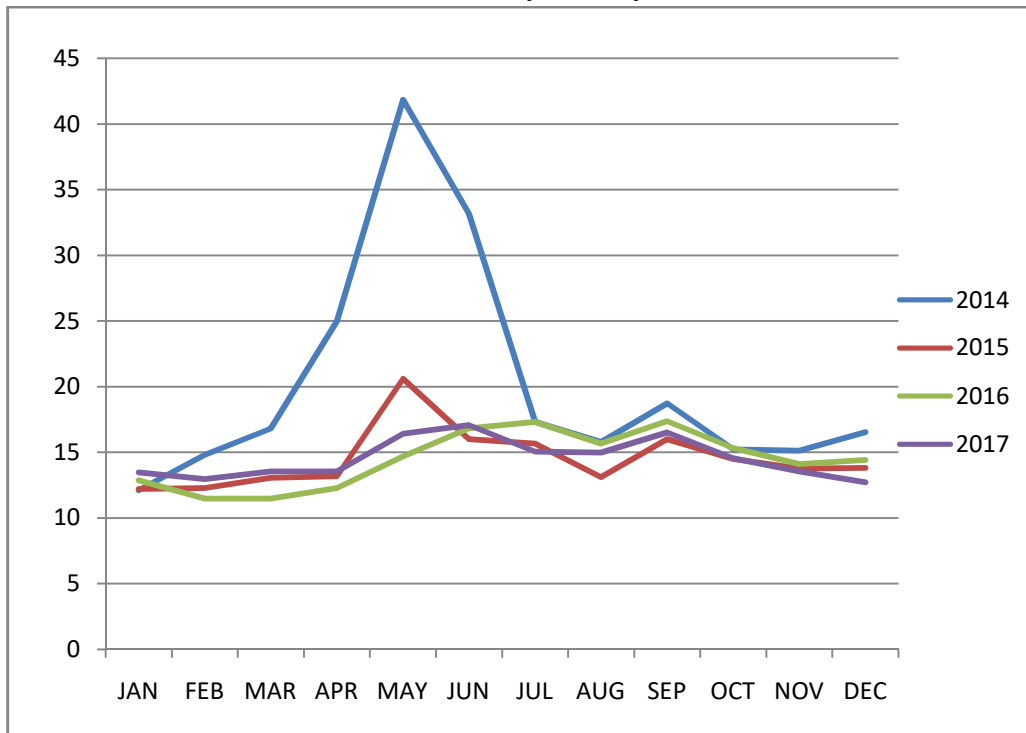
# MOGÁN PRINCESS\*\*\*\*



## DATA OF OCCUPATION AND ELECTRICAL CONSUMPTION IN KW - YEARS 2014, 2015, 2016 & 2017

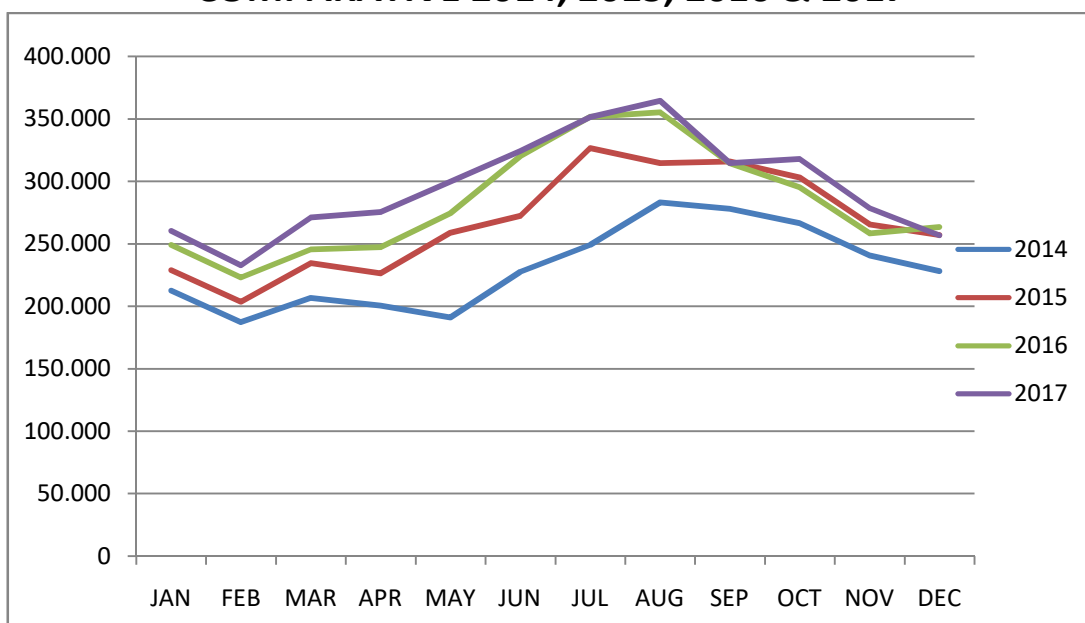
MONTH	2014			2015			2016			2017		
	Guests	kW/H	kW/guest	Guests	kW/H	kW/guest	Guests	kW/H	kW/guest	Guests	kW/H	kW/guest
JAN	17.585	212.696	12,10	18.767	228.983	12,20	19.340	248.978	12,87	19.333	260.342	13,47
FEB	12.656	187.288	14,80	16.586	203.670	12,28	19.402	222.905	11,49	17.931	232.605	12,97
MAR	12.296	206.599	16,80	17.961	234.601	13,06	21.383	245.376	11,48	19.992	271.068	13,56
APR	8.028	200.551	24,98	17.184	226.514	13,18	20.137	247.265	12,28	20.308	275.369	13,56
MAY	4.566	191.083	41,85	12.571	258.909	20,60	18.693	274.387	14,68	18.242	299.736	16,43
JUN	6.860	227.548	33,17	17.043	272.475	15,99	19.036	320.215	16,82	18.991	324.272	17,08
JUL	14.480	249.194	17,30	20.856	326.482	15,65	20.306	351.638	17,32	23.317	351.233	15,06
AUG	17.939	283.057	15,78	23.995	314.424	13,10	22.681	355.199	15,66	24.309	364.361	14,99
SEP	14.841	278.004	18,73	19.753	315.821	15,99	18.101	314.253	17,36	19.049	314.470	16,51
OCT	17.525	266.528	15,21	20.909	303.108	14,50	19.257	295.188	15,33	21.861	317.780	14,54
NOV	15.910	240.600	15,12	19.293	265.480	13,76	18.291	258.160	14,11	20.563	278.388	13,54
DEC	13.810	228.098	16,52	18.630	257.081	13,80	18.269	263.341	14,41	20.180	256.741	12,72
<b>ANNUAL TOTALS</b>	<b>156.424</b>	<b>2.771.246</b>		<b>223.548</b>	<b>3.207.548</b>		<b>234.896</b>	<b>3.396.905</b>		<b>244.076</b>	<b>3.546.365</b>	

## ELECTRICAL CONSUMPTION IN KW PER GUEST - MOGÁN PRINCESS COMPARATIVE 2014, 2015, 2016 & 2017



Total electricity consumption in 2017 is higher than in 2016 (occupation is also higher, with a greater number of overnight stays). However, we see that as of May, the trend is reversed, thanks to the energy saving measures implemented. We hope to maintain that trend in 2018.

## MONTHLY ELECTRICAL CONSUMPTION IN KW - MOGÁN PRINCESS COMPARATIVE 2014, 2015, 2016 & 2017



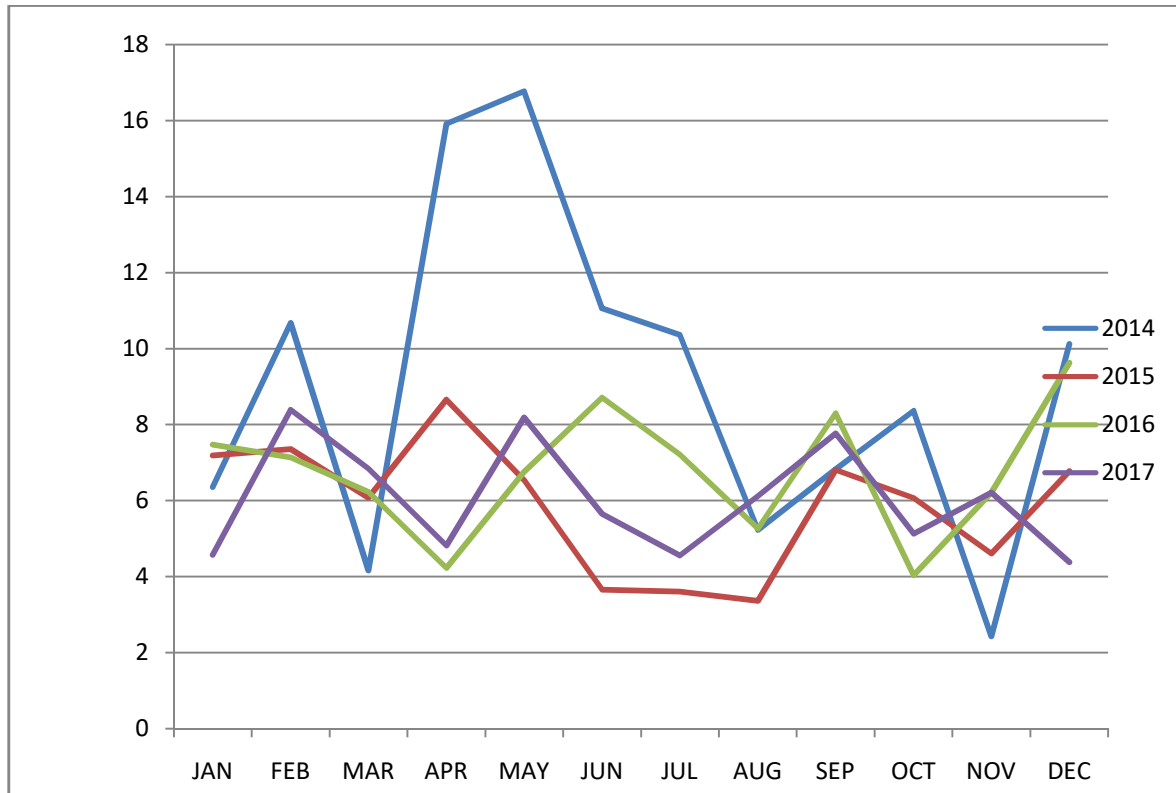
# MOGÁN PRINCESS\*\*\*\*



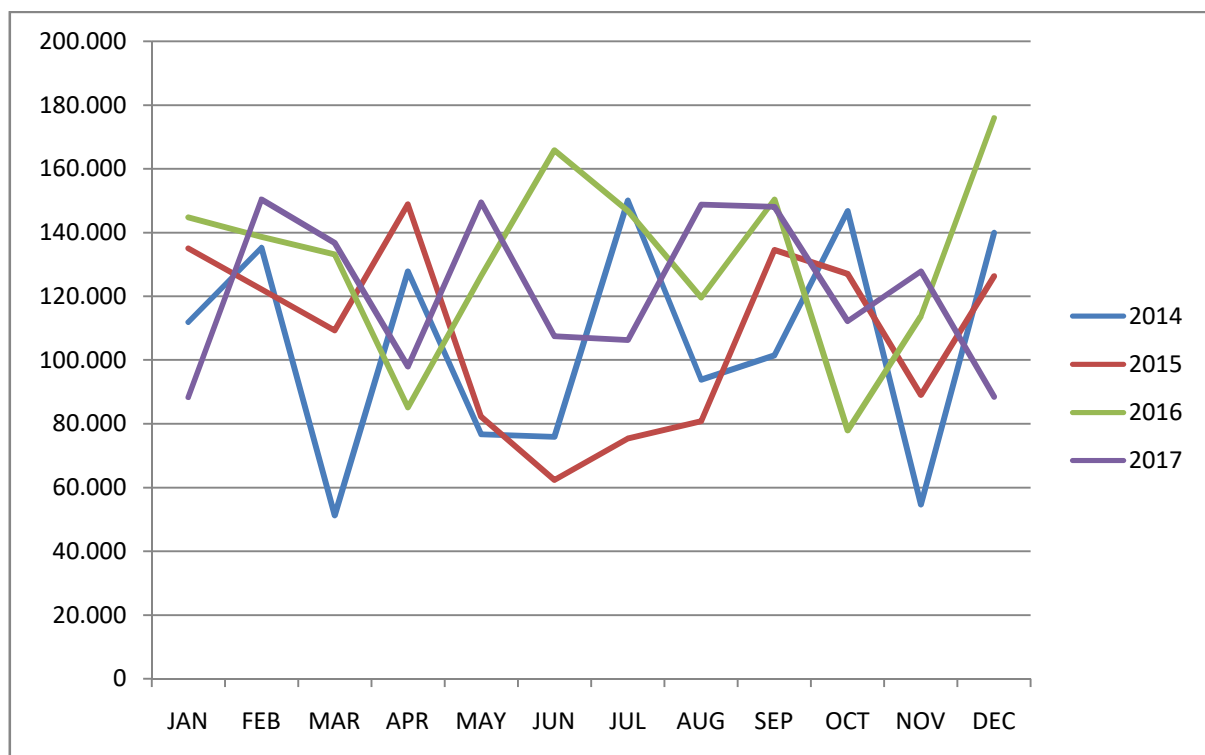
## DATA OF OCCUPATION AND GAS CONSUMPTION IN kWh - YEARS 2014, 2015, 2016 & 2017

MONTH	2014			2015			2016			2017		
	Guests	kWh	kWh/guest	Guests	kWh	kWh/guest	Guests	kWh	kWh/guest	Guests	kWh	kWh/guest
JAN	17.585	111.885	6,36	18.767	135.041	7,19	19.340	144.732	7,48	19.333	88.261	4,57
FEB	12.656	135.242	10,68	16.586	122.205	7,36	19.402	138.588	7,14	17.931	150.354	8,39
MAR	12.296	51.211	4,16	17.961	109.221	6,08	21.383	133.114	6,23	19.992	136.674	6,84
APR	8.028	127.813	15,92	17.184	148.841	8,66	20.137	85.101	4,23	20.308	97.844	4,82
MAY	4.566	76.629	16,78	12.571	82.197	6,54	18.693	126.314	6,76	18.242	149.470	8,19
JUN	6.860	75.892	11,06	17.043	62.347	3,66	19.036	165.733	8,71	18.991	107.374	5,65
JUL	14.480	150.073	10,36	20.856	75.384	3,61	20.306	146.686	7,22	23.317	106.263	4,56
AUG	17.939	93.869	5,23	23.995	80.765	3,37	22.681	119.555	5,27	24.309	148.747	6,12
SEP	14.841	101.418	6,83	19.753	134.492	6,81	18.101	150.340	8,31	19.049	148.038	7,77
OCT	17.525	146.753	8,37	20.909	126.970	6,07	19.257	77.834	4,04	21.861	112.126	5,13
NOV	15.910	54.624	2,43	19.293	88.970	4,61	18.291	113.759	6,22	20.563	127.786	6,21
DEC	13.810	139.953	10,13	18.630	126.274	6,78	18.269	175.879	9,63	20.180	88.408	4,38
ANNUAL TOTALS	156.424	1.265.899		223.548	1.292.736		234.896	1.577.636		244.076	1.461.347	

## GAS CONSUMPTION IN kWh PER GUEST - MOGÁN PRINCESS COMPARATIVE 2014, 2015, 2016 & 2017



## MONTHLY GAS CONSUMPTION IN kWh - MOGÁN PRINCESS COMPARATIVE 2014, 2015, 2016 & 2017



## SUSTAINABILITY REPORT

From the data reports and consumption statistics above (water measured in m<sup>3</sup>, gas measured in kWh and electricity, measured in kW), a tendency towards a bettered use of each one of the resources can be observed if we compare the data of the different years between 2014 and 2017.

**WATER:** The best indicator of the tendency to save is the daily consumption per guest. We can see how in 2016 and 2017, it is unmistakably better than previous years, as a result of the savings policy with the installation of flow reducers and the planting of species with less need for irrigation. Likewise, drip irrigation was an appropriate measure. We hope to continue improving and expect a savings of between 2% and 4% by 2018.

**GAS:** The consumption of gas, is not so linked to the number of guests; Both the boilers and the kitchen, have to work the same number of hours, regardless of the number of customers hosted. It is also an indicator of the climatology of each year, since at higher environmental temperatures, less use of gas is needed to heat the water in the pools.

**ELECTRICITY:** Electricity itself is an occupation indicator, as the higher the number of guests is, the more lights and electronic devices will be connected in each room. In this field, we are still looking for improvements, although we already see results in the lowered consumption per customer since mid-2017, when in addition to continuing with the replacement of conventional lamps by other led or low consumption ones, which are already 50% of the total, we replaced all cathode television sets with flat screens with low consuming led technology. We hope to continue observing results during 2018 and aim for a 5% reduction in electricity consumption if we manage to change all the lighting in the hotel, as well as the gradual replacement of all the appliances, by others more efficient.

In terms of total energy consumption in kWh (gas + electricity), these are the annual totals, which show the energetic efficiency achieved and although the total energy consumption is higher than in previous years, so is the number of hosted customers.

We can state from the energy consumption figures per guest, that there has been an improvement, which we look forward to maintain in 2018.

YEAR	GAS IN kWh	Electricity in kWh	ANNUAL TOTAL	kWh/guest
2014	<b>1.265.899</b>	<b>2.771.246</b>	4.037.145	25,80
2015	<b>1.292.736</b>	<b>3.207.548</b>	4.500.284	20,13
2016	<b>1.577.636</b>	<b>3.396.905</b>	4.974.541	21,17
2017	<b>1.461.347</b>	<b>3.546.365</b>	5.007.712	20,51

# REPORT ON IMPROVEMENTS IN ENERGY EFFICIENCY

## 2015 to 2018

Some of the most recent improvements made to the Mogán Princess in favor of sustainability are:

- 2015: Replacement of the electrical panel in the engines room with a more energy efficient one.
- 2016: Progressive replacement of conventional lighting with led and low consumption, in particular the entire common areas (disco, bars...).
- 2016: Acquisition of new ice machine in the cellar of the Main Kitchen.
- 2017: Updating and replacement of tires in cold chamber doors to avoid temperature leaks and maintain energy efficiency.
- 2017: Replacement of the main oven of the kitchen by a new generation model, more energy efficient.
- 2017: Replacement of all cathode TVs in customer rooms with more energy efficient LED screens.
- 2018: Replacement of the evaporator of the cold room in the Main Kitchen and project to continue replacing the old ones with new more efficient models.